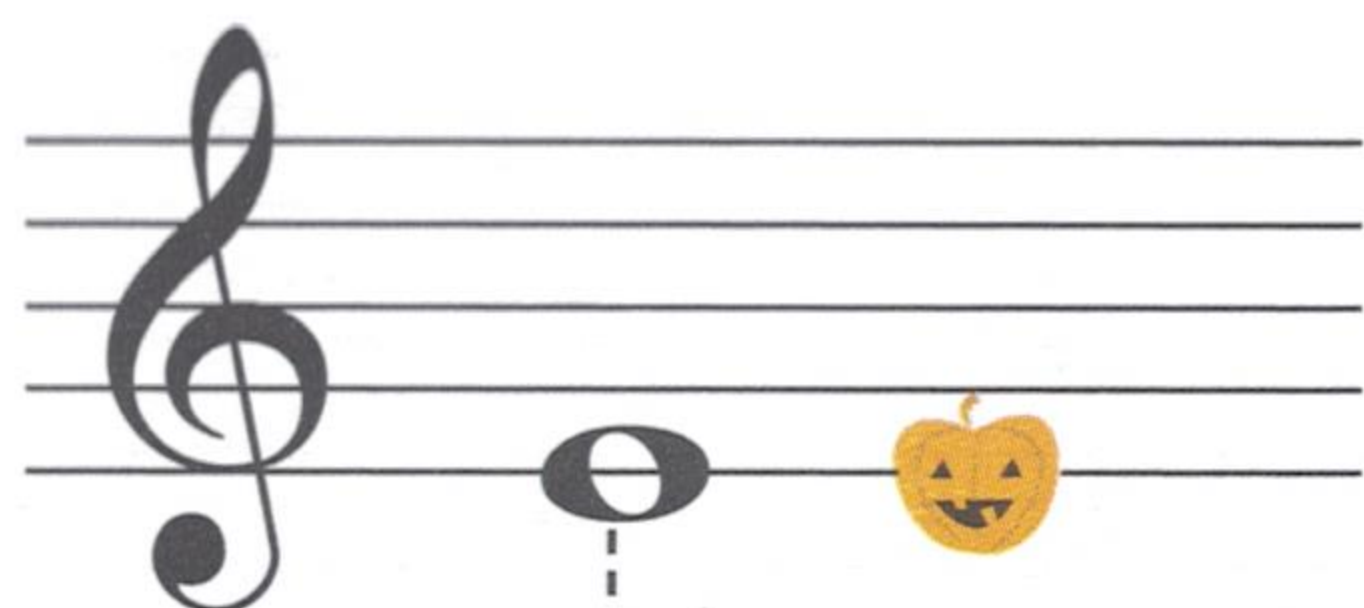
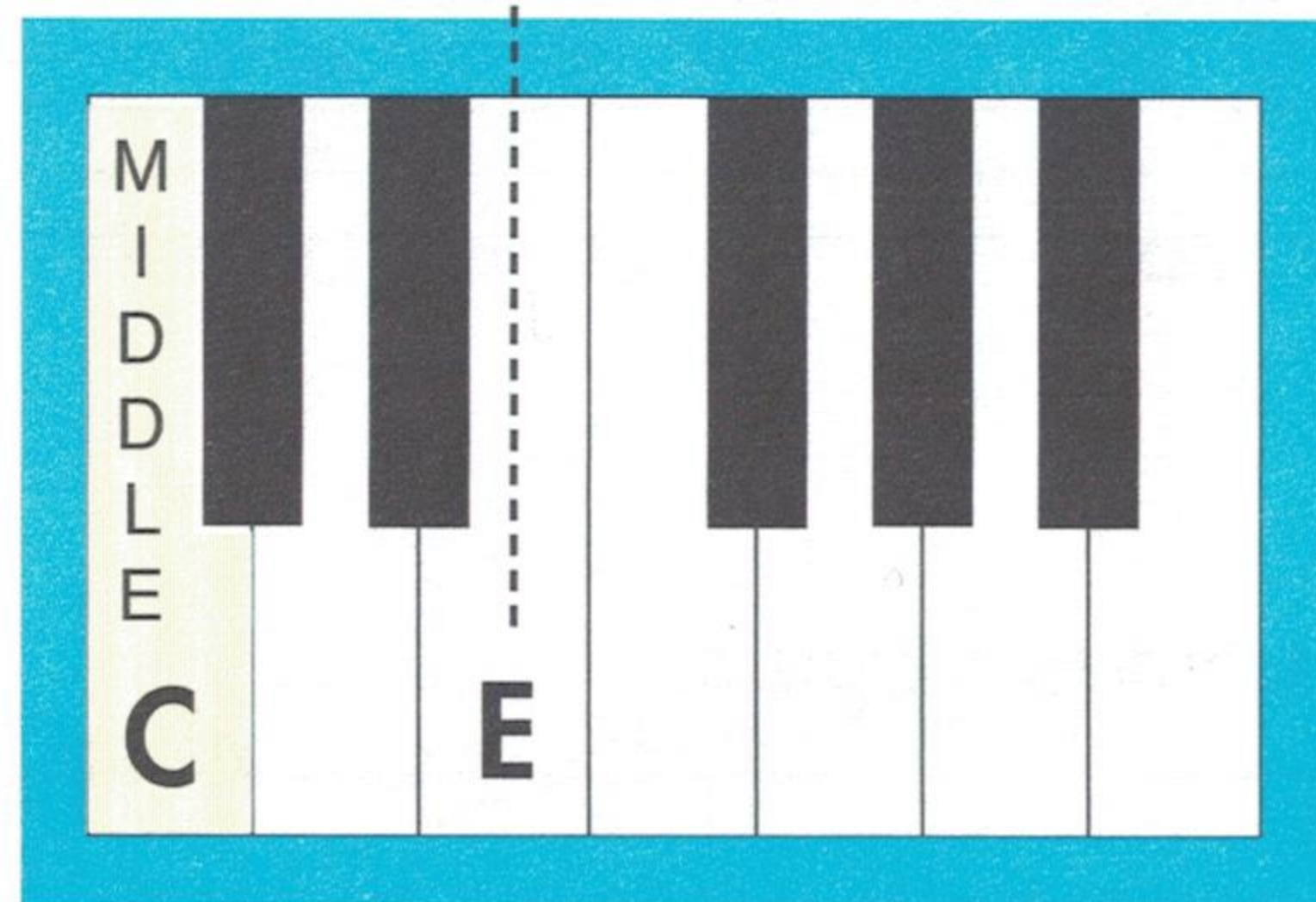


Treble Clef E



Treble E sits on **line 1** of the treble staff.



Tips from Carlos:

1. Copy the rhythm your teacher plays on **E**. Now you be the teacher!
2. Play and sing letter names, then words.



Pumpkin Party

Happily
1 *echo!*



Teacher Duet: (Student plays as written.)

5

3
Let's carve pump - kins at my house to - night. (2 - 3 - 4)

9

3 1 Lift from your wrist on a gust of wind!

3 1 Move to next higher C-E.

3 1 Move to next higher C-E.

8va Play the highest C-E on the piano.

3 1 Leaves (2 - 3 - 4) fly (2 - 3 - 4) *p* up (2 - 3 - 4) high!



Point out 6 measures with **whole notes**.
 Point out 2 measures with only **half notes**.
 Point out 2 measures with only **quarter notes**.

♪ Can you spot Tap at the party?